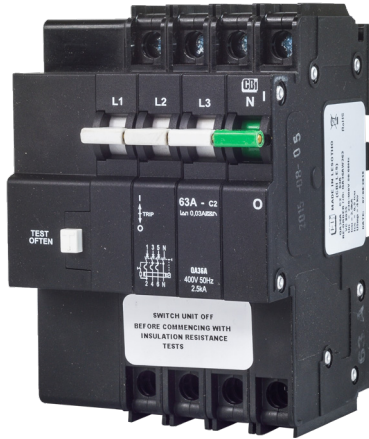


## QA36 - Series Earth Leakages



**QA36A**  
Dual (DIN & mini rail) mount



**QA36C**  
Dual (DIN & mini rail) mount

### Features

- Hydraulic-magnetic technology
- 100% rating capability, independent of ambient temperature
- VC 8035 compliant
- Ratings 6 to 63 A
- Earth Leakage sensitivity 30 mA, **Type A**
- Three pole plus switched neutral earth leakage protection
- Precision tripping characteristics
- Trip indication with mid-trip position
- Can be switched on immediately after tripping
- Suitable to use for electrical isolation
- Shell designed for easier installation onto busbar
- 57 mm front escutcheon

### Applications

- Residential and commercial applications requiring high sensitivity earth leakage protection from electrical shock and fire hazards
- Telecom / datacom equipment
- Lighting control
- UPS equipment
- Alternative energy equipment

### Approvals

VC 8035

*Hydraulic-Magnetic Circuit Breakers 100% rated, unaffected by ambient temperature*

## QA36 - Series Earth Leakages

### Technical Data

Product Type	QA36A	QA36C
Approvals	VC 8035	
Number of Poles	3 + N	3 + N
Standard Ampere Ratings	6 A to 63 A	40 A, 63 A
Sensitivity	30 mA	30 mA
Equipment Type Rated Voltage	400 Vac	400 Vac
Ultimate S/C breaking Capacity (Icu)	2.5 kA	-
Rated S/C Withstand Capacity (Icw)	-	2.5 kA

Product Type	QA36
Operating Temperature Range	-40 °C to +85 °C
Mounting Options	Dual (DIN & mini rail) mount
Time Delay Curves	2 (A version only)
Endurance	10000 operations - 1500 electrical operations
Dielectric Strength	1480 V (single pole), 50 Hz for one minute after testing
Weight	570 g per pole (unpacked)
Altitude	Certification tests done at altitude ≈ 2000 metres. Will operate at higher altitudes.
Shock	10 G (IEC 60068-2-27)
Vibration	1.5 G (IEC 60068-2-6) (sinusoidal wave)
Flammability	I3 - Ignition does not persist at 850 °C after glow wire is withdrawn with an oxygen index of ≥ 28
Toxicity	F1 - Smoke index of ≤ 20 which determines the fume class
Pollution Degree	PD2 - Normally only non-conductive pollution occurs. Temporary conductivity caused by condensation is to be expected.

Earth Leakage	Wire Size (IEC)	Torque (IEC)	Comments
Main Terminal	0.75 mm <sup>2</sup> - 35 mm <sup>2</sup>	2.5 Nm	Pozidriv #2 Combi head

## QA36 - Series Earth Leakages

### Long Code

Example Code: Q-A-36-A---DM-2-63A-30mA-240V----

Group	1	2	3	4	5	6	7	8	9	10	11	12	13
Requirement	Q frame	Type F	1 + pole+N	Overload	No Auxiliary or additional pole	Dual Mount	Medium delay curve 2	Current rating 63 A	Sensitivi- ty 30 mA	Voltage 240 Vac	Future use	Future use	Future use
Long Code	Q	A	36	A	-	DM	2	63 A	30 mA	400 V	-	-	-

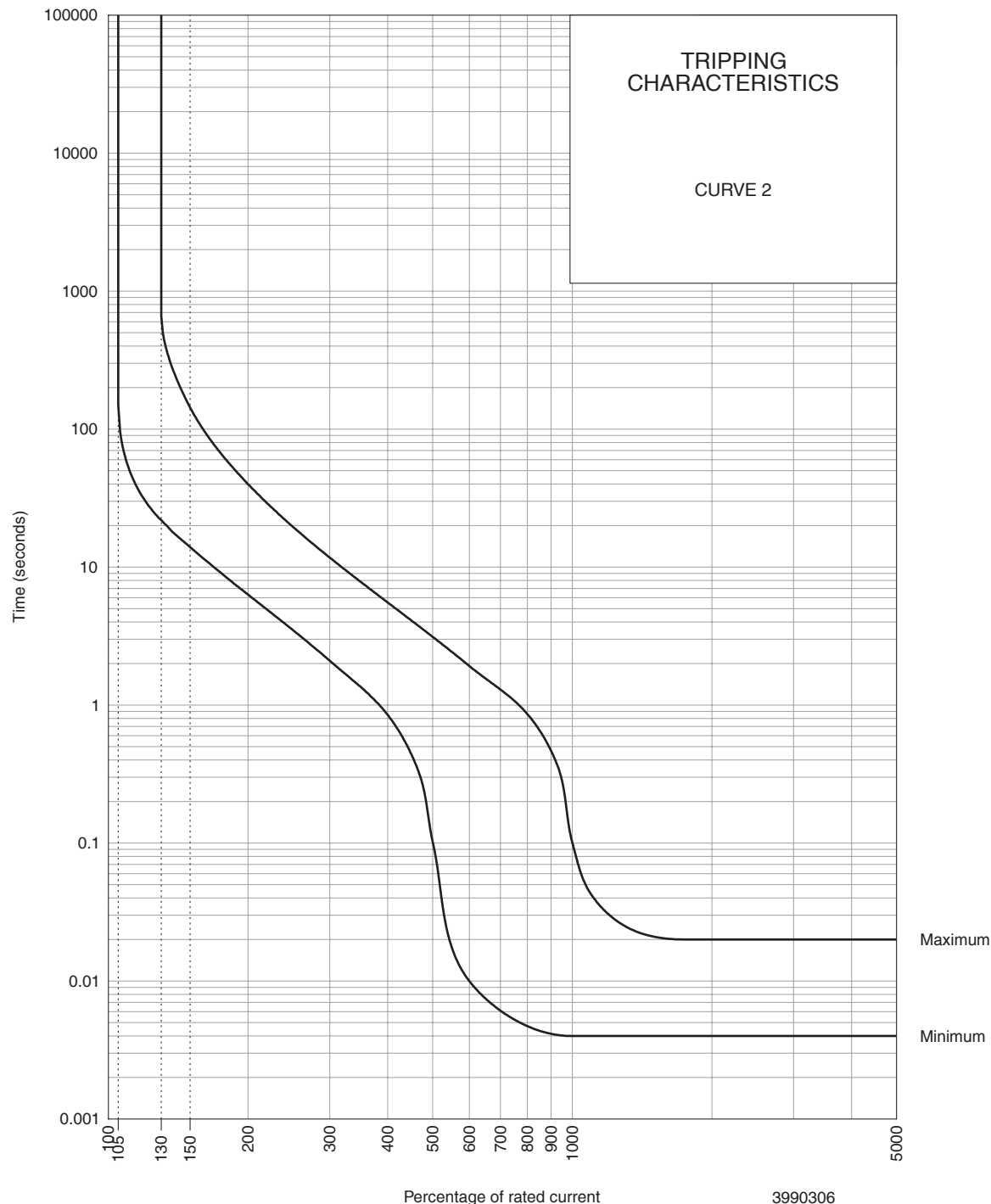
### Ordering Information

Group 1: Frame Type	Code	Description	Comments
	Q	Earth Leakage	36 mm wide
Group 2: Product Type	Code	Description	Comments
	A	400 Vac	2.5 kA (VC 8035)
Group 3: No of Poles	Code	Description	Comments
	36	Three pole plus switched neutral (3+N)	QA36
Group 4: E-L Type	Code	Description	Comments
	A	Overload	White and green handle
	C	Switch disconnecter	Green handle
Group 5: Auxiliary / Additional Pole	Code	Description	Comments
	-	Not applicable	
Group 6: Mounting	Code	Description	Comments
	DM	Dual (DIN & mini rail ) mount	Dual mount supplied in black body only - 57 mm Escutcheon
Group 7: Time Delays	Code	Description	Instantaneous Trip Point (x In)      Comments
	-	Not applicable	-      Time delay not applicable for the switch
	2	Medium time delay	5 – 10
Group 8: Current Ratings	Code / Description		Comments
	6, 10, 15, 20, 25, 30, 32, 40, 50, 60, 63 A		QA36A Ratings available vary depending on certification * Other ratings are available as special orders. Check availability.
	40, 63 A		QA36C
Group 9: Sensitivity	Code	Description	Comments
	30 mA	30 mA	Standard
Group 10: Voltage	Code	Description	Comments
	400 V	400 Vac	
Group 11 Future Use	Code	Description	Comments
	-	Not applicable	For future use
Group 12 Future Use	Code	Description	Comments
	-	Not applicable	For future use
Group 13 Future Use	Code	Description	Comments
	-	Not applicable	For future use

*For options not listed, please contact CBI*

## QA36 - Series Earth Leakages

### Time Delay Curves

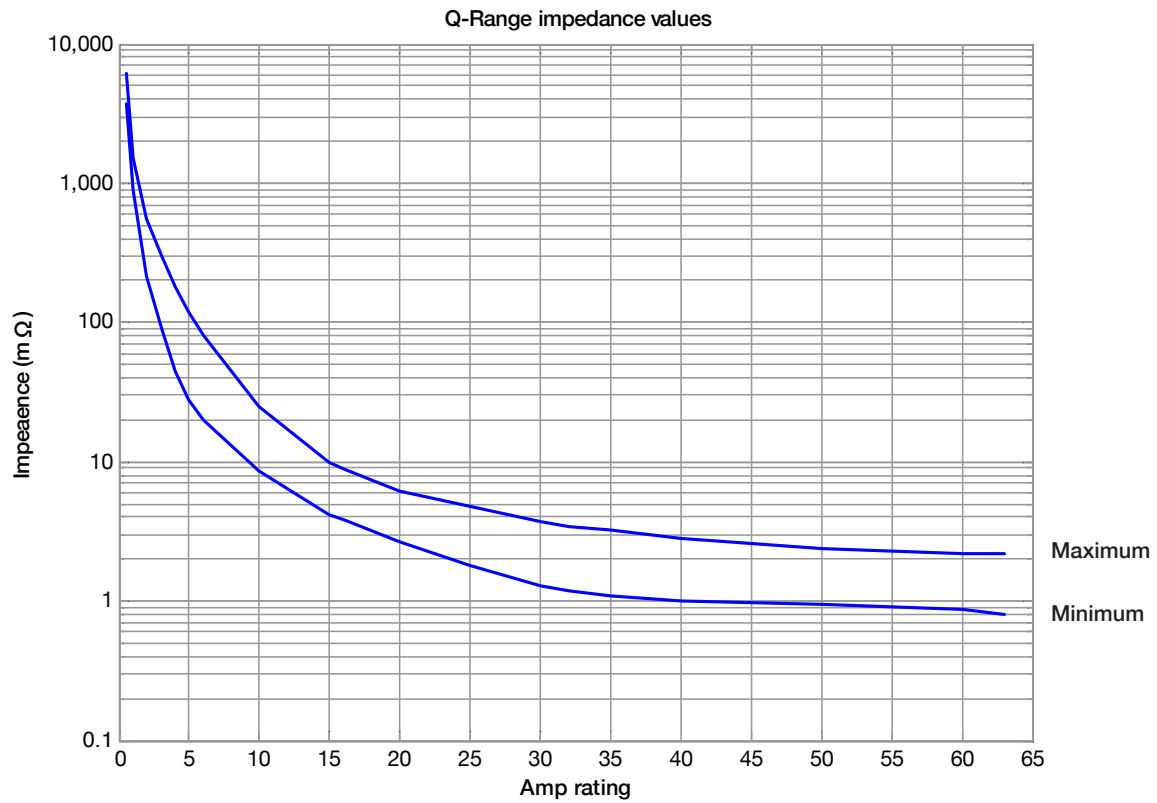


PERCENTAGE OF RATED CURRENT	105%	130%	145%	150%	200%	300%	400%	500%	600%	700%	800%	900%	1000%	2000%
MINIMUM TRIP TIME IN SECONDS	NO TRIP	22	15.4	14	6.3	2.1	0.85	0.1	0.001	0.006	0.005	0.041	0.004	0.004
MAXIMUM TRIP TIME IN SECONDS	NO TRIP	660	180	144	40	12	5.5	3	1.92	1.3	0.86	0.47	0.1	0.02

\* The published time delay curves are generated at 30°C ambient temperature with the Circuit Breaker mounted in the up-right position. The “must hold”, “must trip” and “instantaneous trip” current values are not affected by temperature, although delay time for the other operating current values may have to be adjusted using the temperature compensation curve which is available on request.

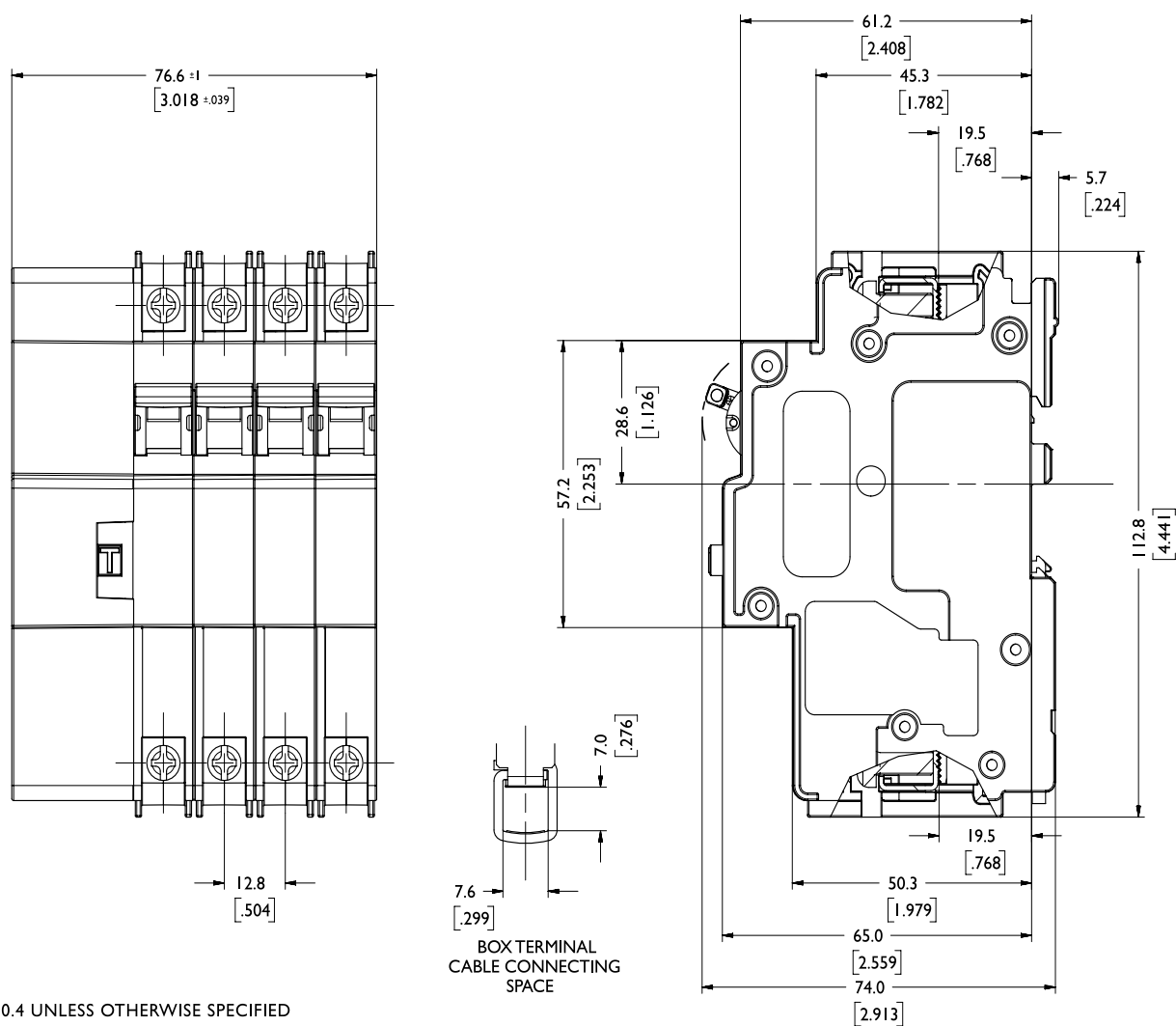
## QA36 - Series Earth Leakages

### Internal Impedance vs Current Rating



## QA36 - Series Earth Leakages

### Outline Dimensions: Dual (DIN & mini rail) mount



TOLERANCE ±0.4 UNLESS OTHERWISE SPECIFIED  
(DIMENSION IN BRACKETS ARE IN INCH)

Please review our Customer Terms and Conditions on [www.cbi-lowvoltage.co.za](http://www.cbi-lowvoltage.co.za)

All rights reserved. Unless otherwise indicated, all materials on these pages are copyrighted by CBI (Pty) Ltd. No part of these pages, either text or image may be used for any purpose other than personal use. Therefore, reproduction, modification, storage in a retrieval system or retransmission, in any form or by any means, electronic, mechanical or otherwise, for reasons other than personal use, is strictly prohibited without prior written permission. CBI (Pty) Ltd reserves the right to alter any details of this document without notice and while every effort is made to ensure the accuracy of the content, no warranty is given as to accuracy of this document and no responsibility will be accepted for error or misinterpretation and any resulting loss.

#### AUSTRALIA

**CBI-electric: Australia**  
 27 Wedgewood Rd, Hallam  
 Victoria 3803 Australia  
 Tel: +61 3 8752 9300  
 Fax: +61 3 9796 5407  
 Email: [sales@cbi-electric.com.au](mailto:sales@cbi-electric.com.au)  
 Website: [www.cbi-electric.com.au](http://www.cbi-electric.com.au)

#### INDIA

**CBI-electric: Asia**  
 A1, Pushpagiri Residency, 1st Cross  
 2nd Main, Jyothi Nagar, B.G Road  
 Bengaluru 560083, India  
 Tel: +91-9880553153  
 Email: [salesasia@cbi-electric.com](mailto:salesasia@cbi-electric.com)  
 Website: [www.cbibreakers.com](http://www.cbibreakers.com)  
 Website: [www.cbi-lowvoltage.com](http://www.cbi-lowvoltage.com)

#### SOUTH AFRICA

**CBI-electric: low voltage**  
 Tripswitch Drive Elandsfontein  
 Gauteng South Africa  
 Tel: +27 11 928 2000  
 Fax: +27 11 392 2354  
 Email: [cbi@cbi-electric.com](mailto:cbi@cbi-electric.com)  
[internationalsales@cbi-electric.com](mailto:internationalsales@cbi-electric.com)  
 Website: [www.cbi-lowvoltage.com](http://www.cbi-lowvoltage.com)

#### USA

**CBI-electric: North America**  
 35 E. Uwchlan Ave Suite 328  
 Exton PA 19341 USA  
 Tel: +1 610 524 9949  
 Fax: +1 610 524 9945  
 E-mail: [info@cbibreakers.com](mailto:info@cbibreakers.com)  
 Website: [www.cbibreakers.com](http://www.cbibreakers.com)