

# CBi Astute Smart Adaptor (ASA) Instruction Manual



## CBi Astute Smart Adaptor (ASA)

- ONLY compatible with 2.4 GHz Wi-Fi with internet connection
- Bluetooth enabled
- Application controlled - free CBI Home App available
- Custom automation and custom scenarios
- No hub required
- For indoor use only

## Specification

<b>Voltage</b>	240 V, 50/60 Hz
<b>Connectivity</b>	Wi-Fi 2.4 Ghz and Bluetooth

# Connecting the CBI Astute Smart Device to Wi-Fi

## Step 1 - Download the App

**Option 1:** Search for **CBI Home** on the App Store or on Google Play and install. See App icon below:



**Option 2:** Scan the QR code below and select App Store or Google Play:



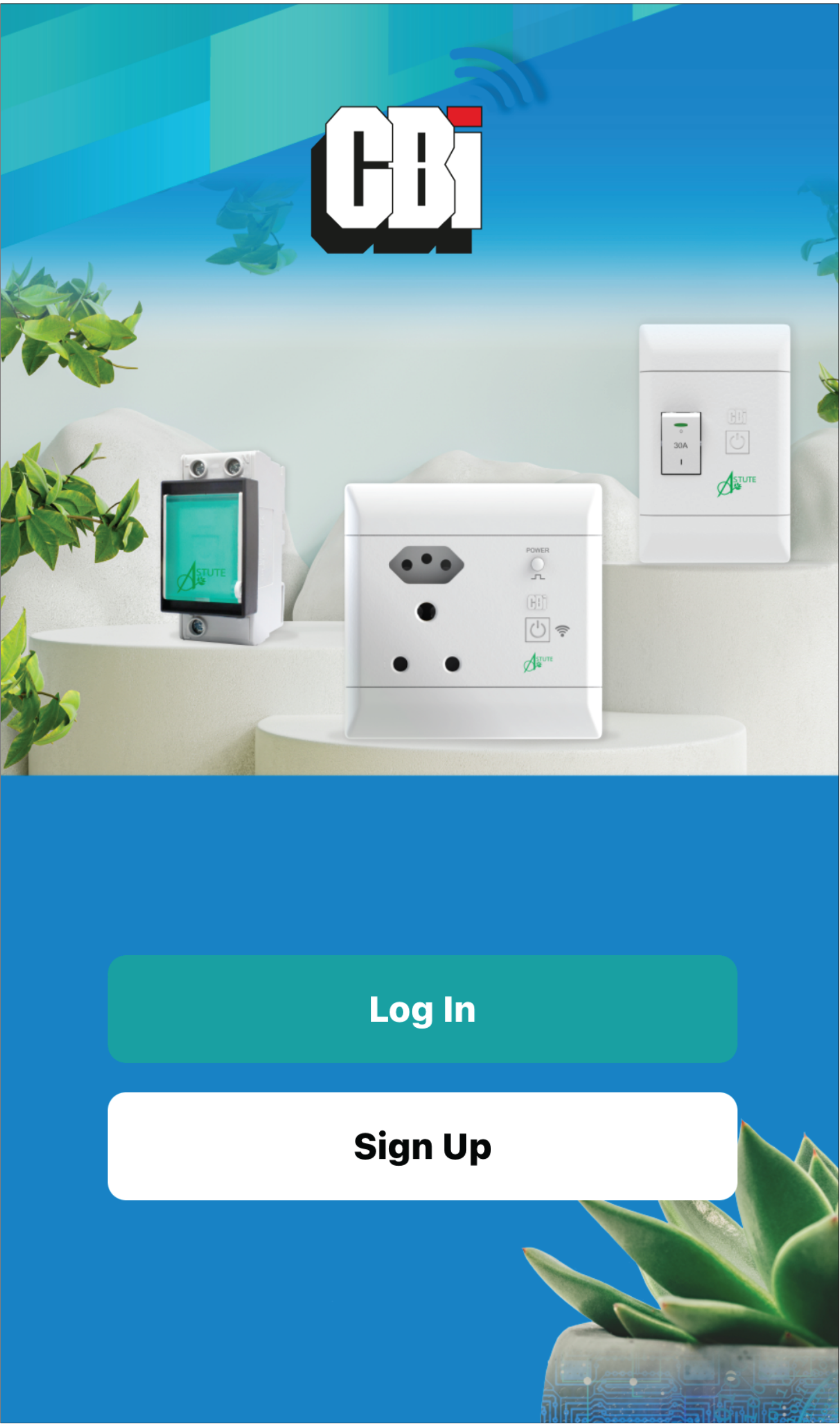
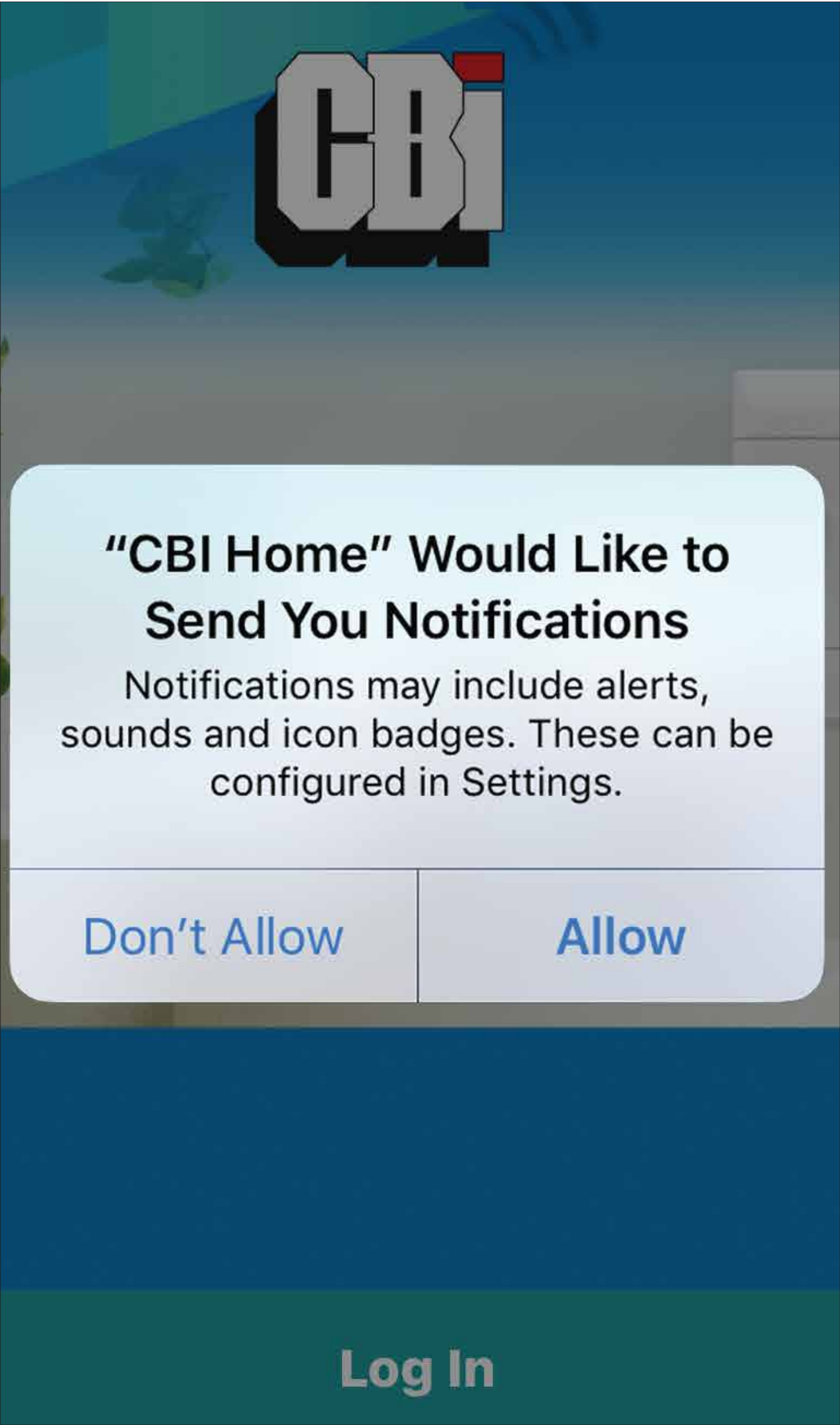
*Apple and the Apple logo are trademarks of Apple Inc., registered in the U.S. and other countries and regions. App Store is a service mark of Apple Inc. Google Play and the Google Play logo are trademarks of Google LLC.*



# Step 2 - Register a new account

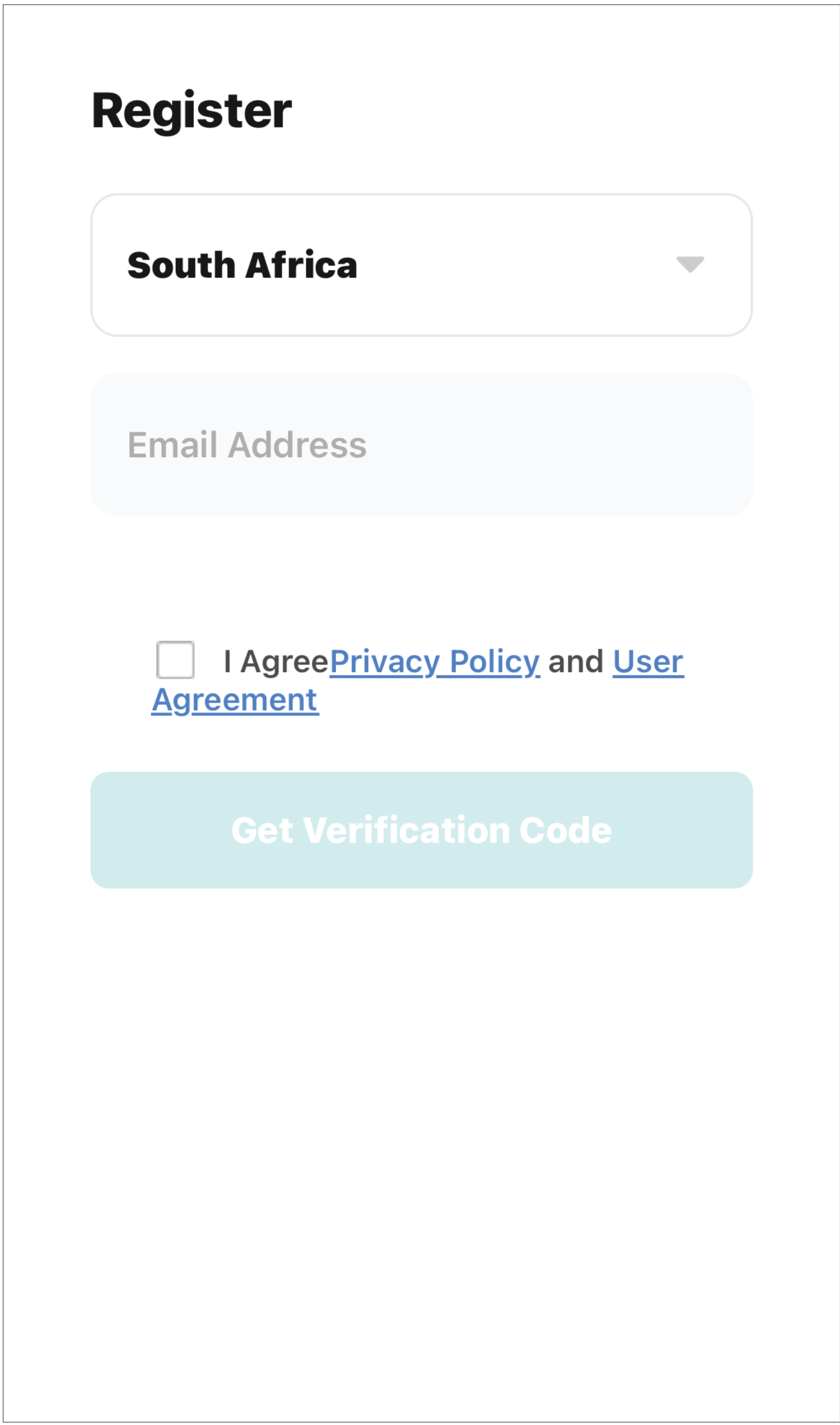
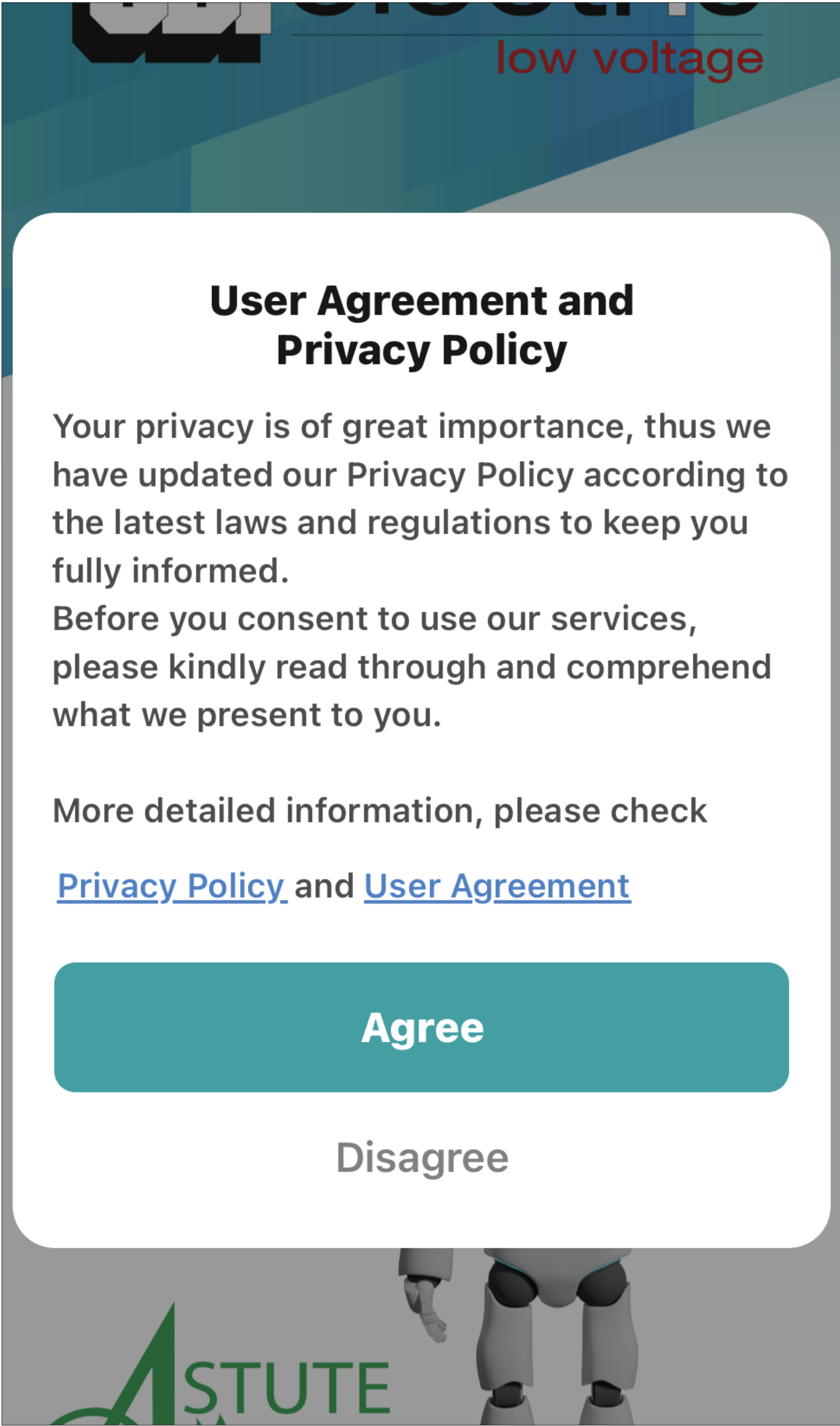
Once installed, open the CBI Home App, tap “**Allow**” on the pop-up message if you would like to receive notifications.

The following screen will appear, tap on “**Sign Up**”.



A privacy policy pop-up message will appear, read and tap “**Agree**” to proceed.

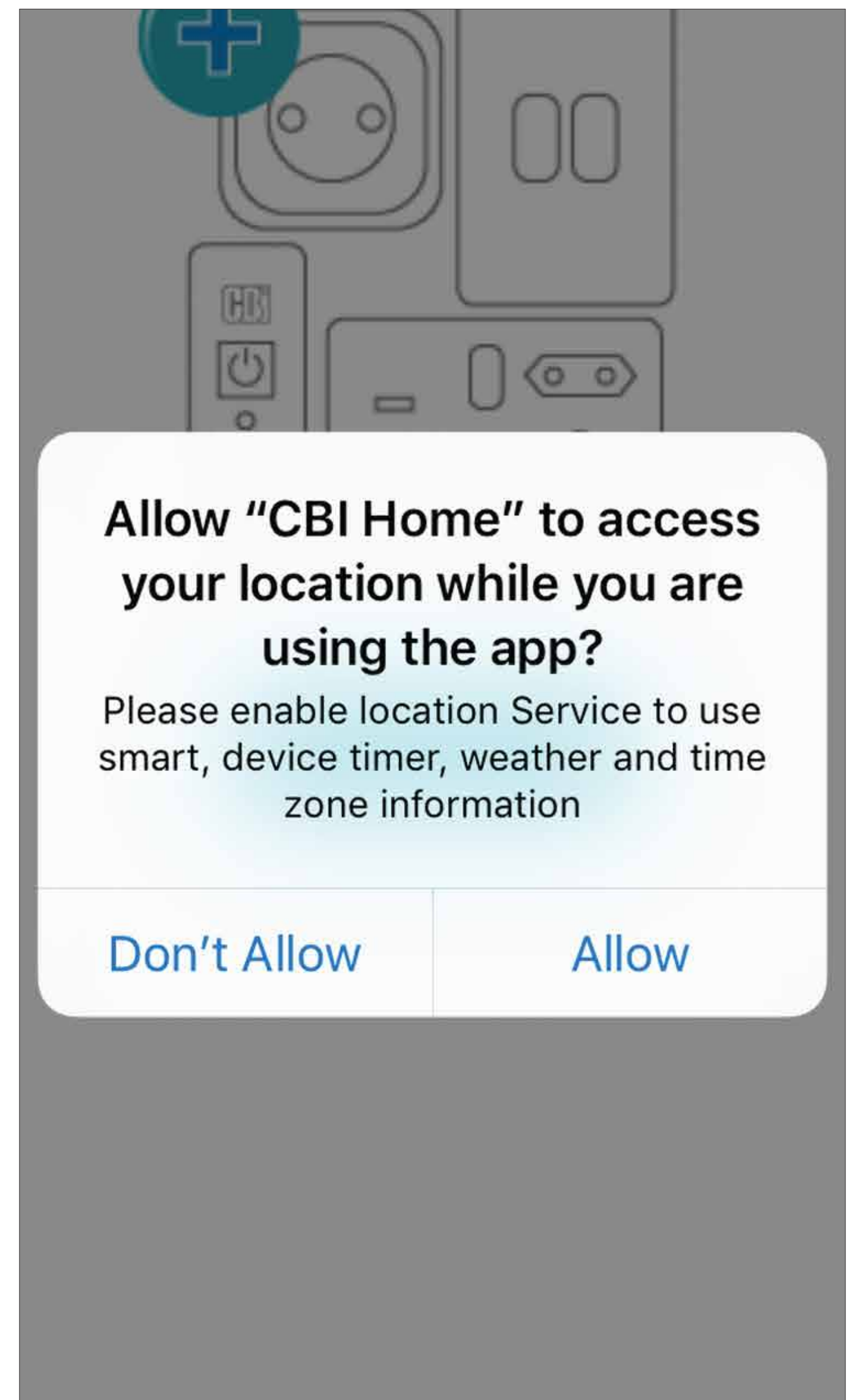
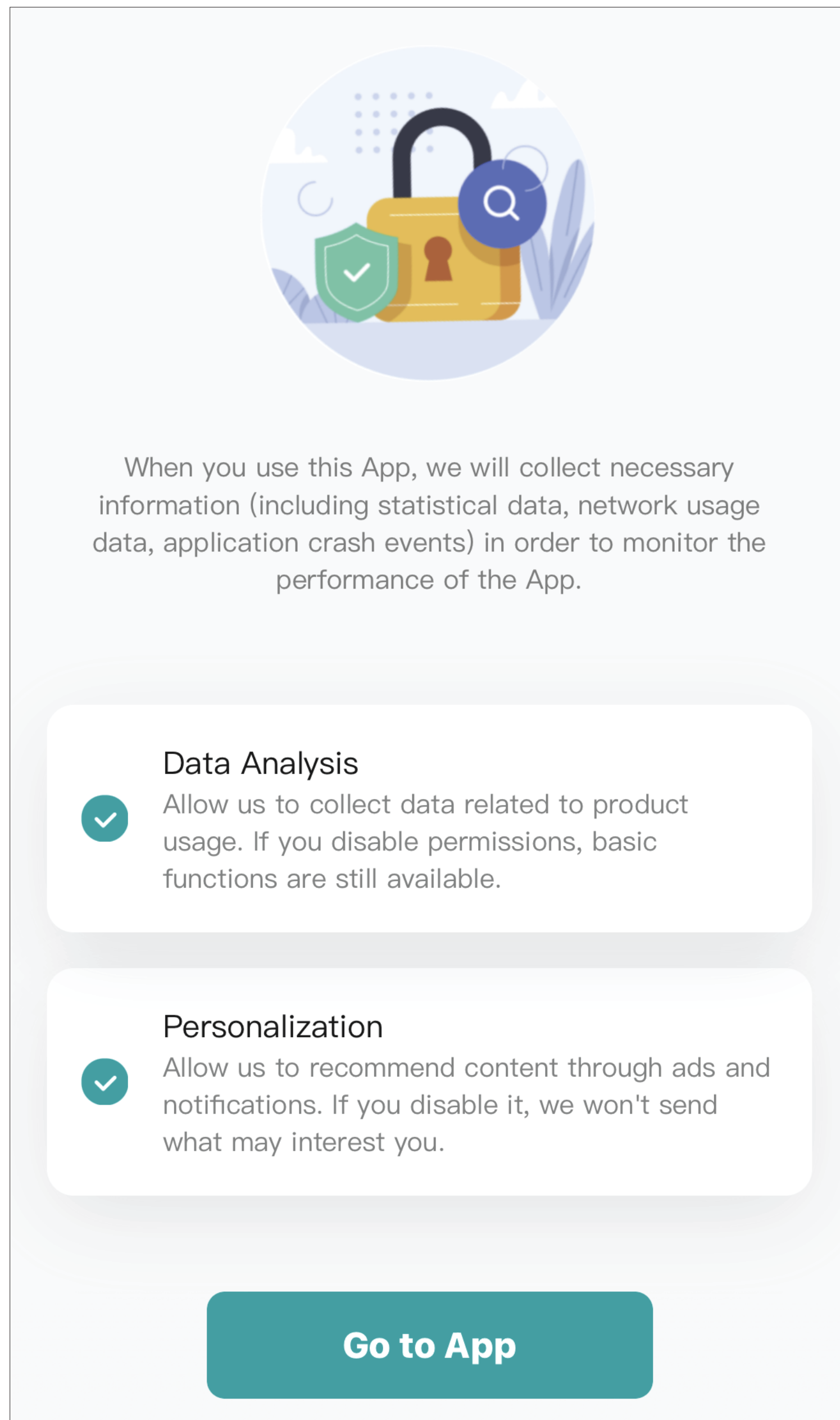
Register with an email address. Once the chosen email address has been entered, tick the “**I agree User Agreement and Privacy Policy**” box and tap on “**Get Verification Code**” and follow the on-screen prompts.





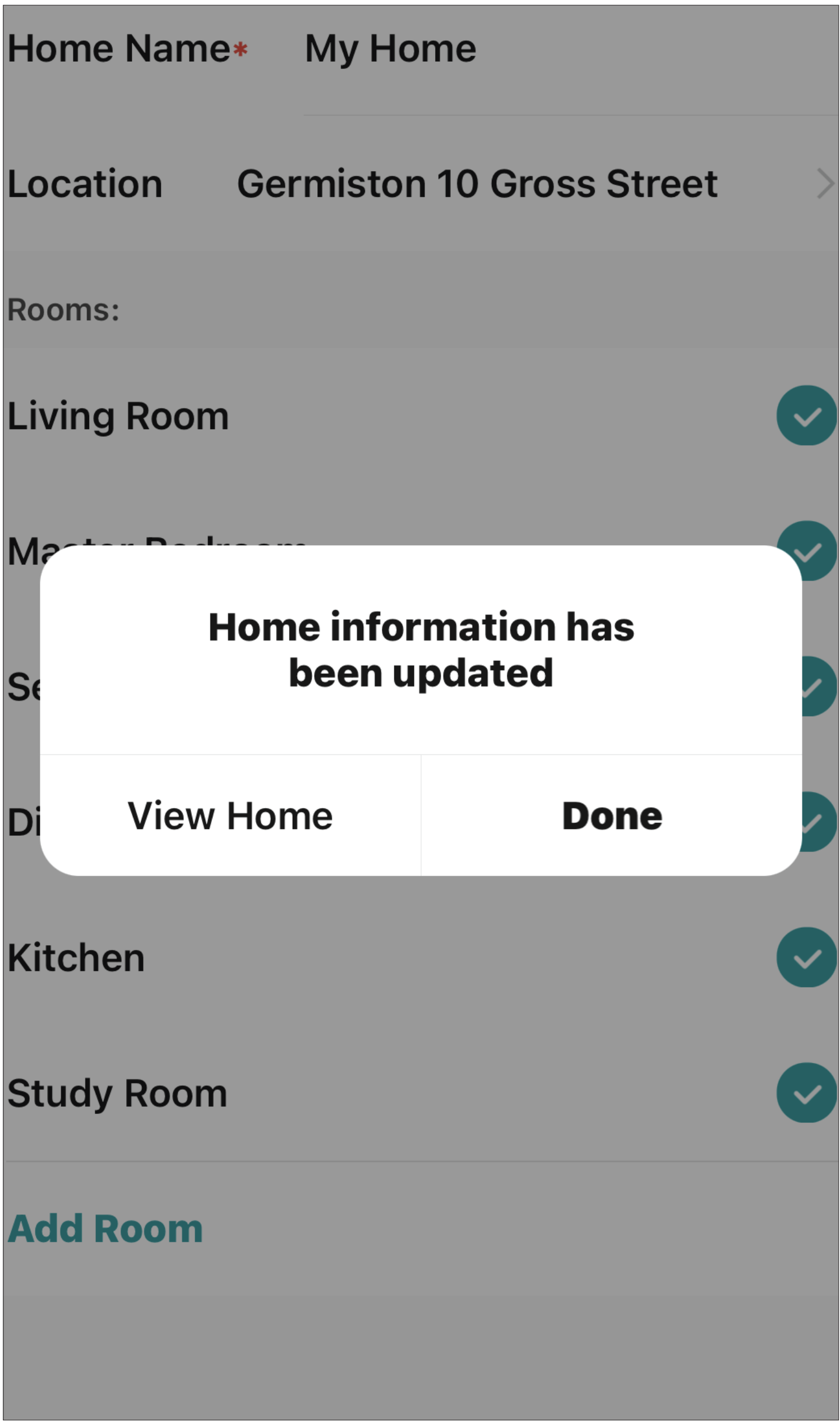
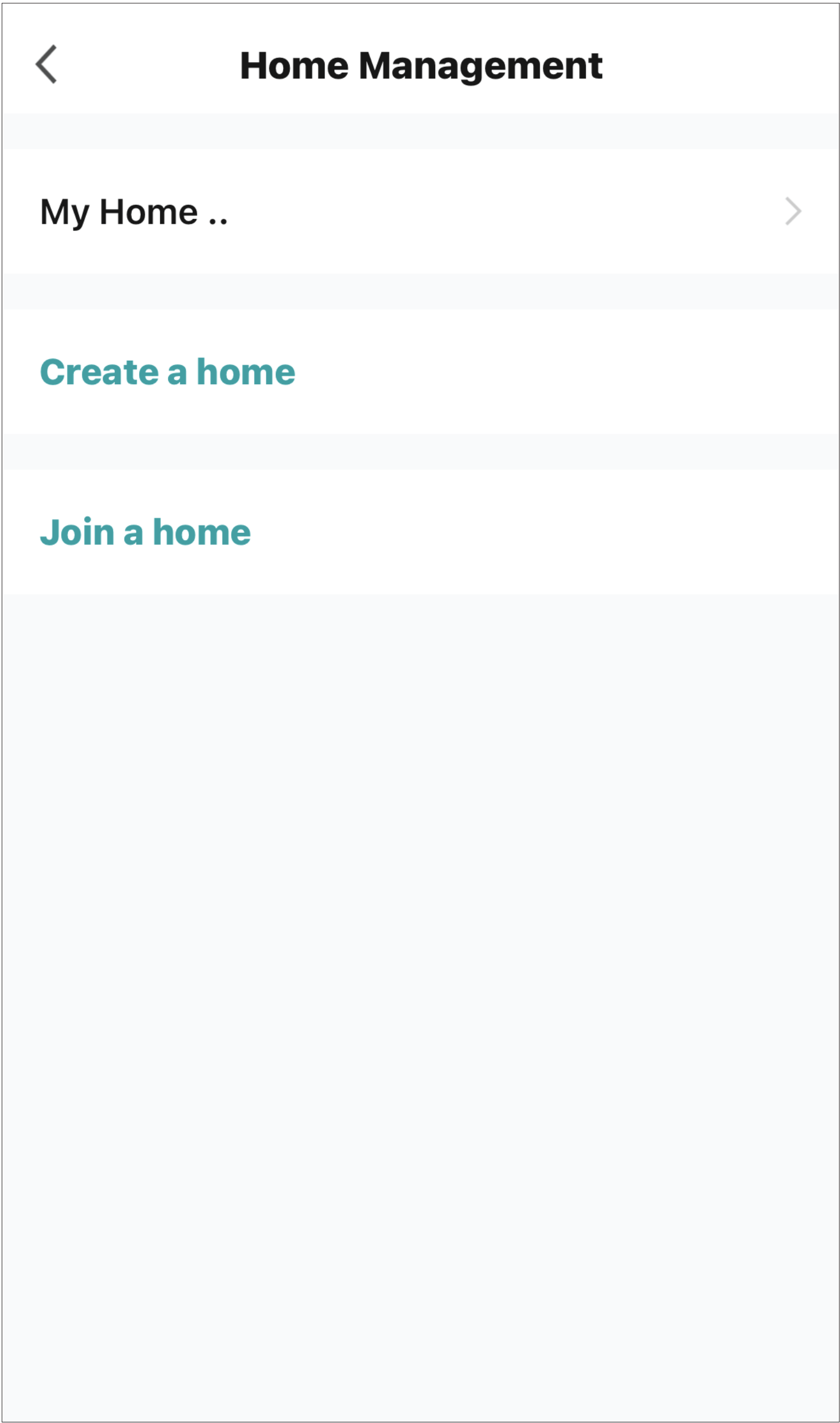
Allow the App the permissions required, tap **“Go to App”**.

Allow the App to use your location for full functionality - tap **“Allow”**.



### Step 3 - Home setup

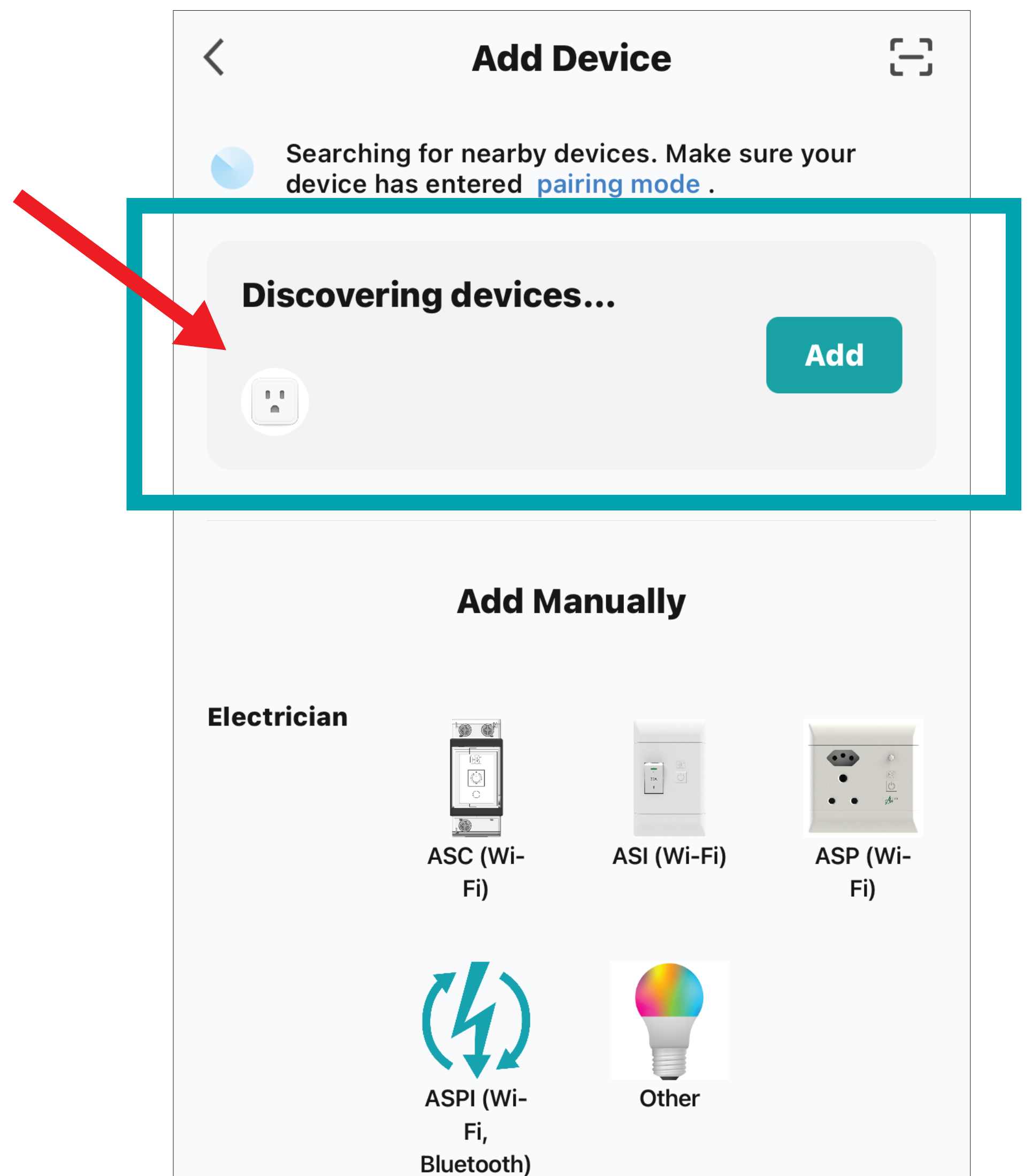
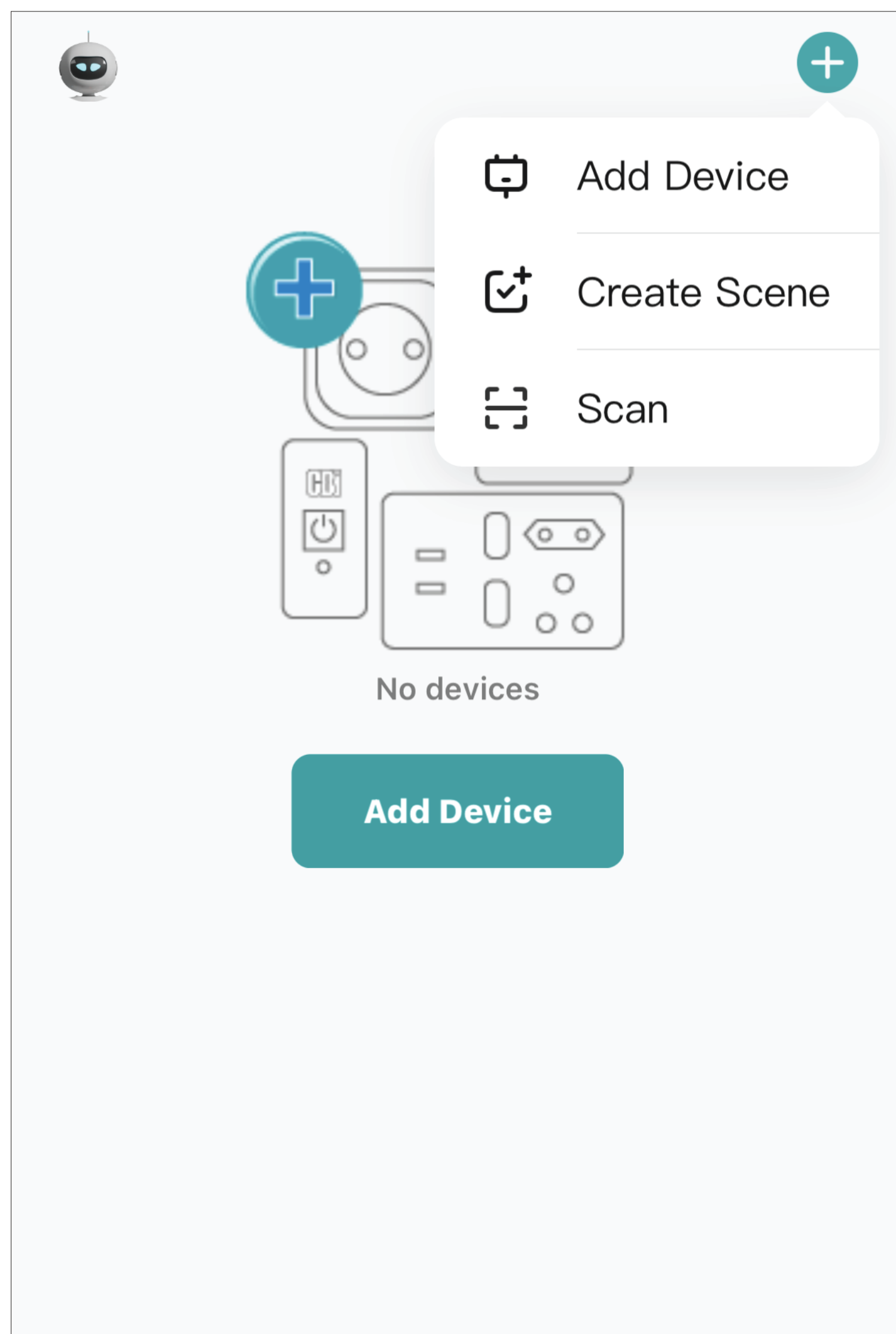
Click on the “**Me**” icon tap on “**Home Management**”. Tap on “**My Home**” and tap next to “**Home Name**”, then create a home name. Tap next to “**Location**”. Select the home location on the map and tap “**Confirm**”. Tap to select the relevant rooms and tap “**Save**”. Tap on “**View Home**” or tap “**Done**”. Home Setup is now complete.



## Step 4 - Pair device to App

Tap the “+” in the right-hand corner and tap “**Add Device**” to add the device to your App (smartphone / tablet should be connected to the same 2.4 GHz Wi-Fi connection). Ensure that **Bluetooth** is ON.

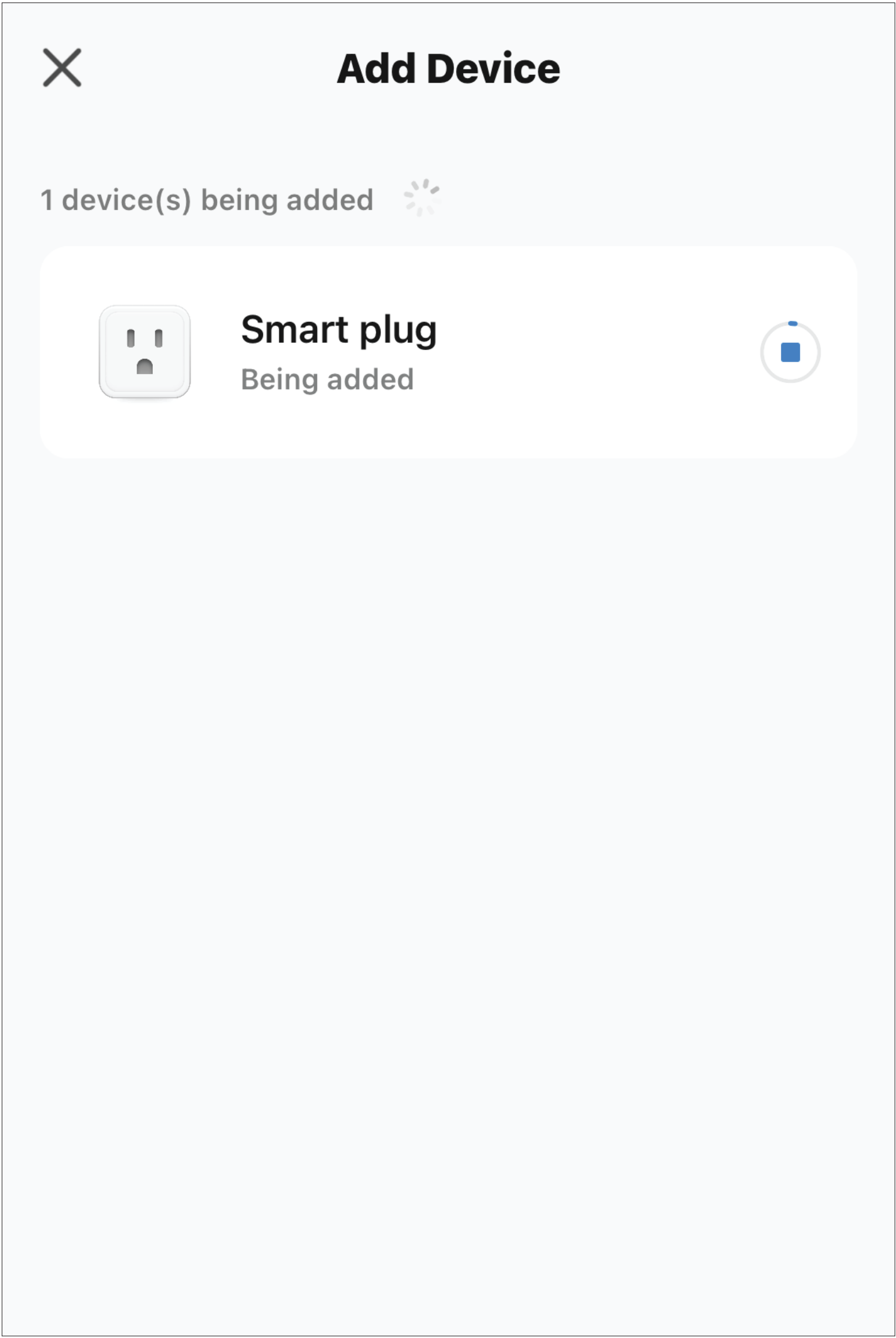
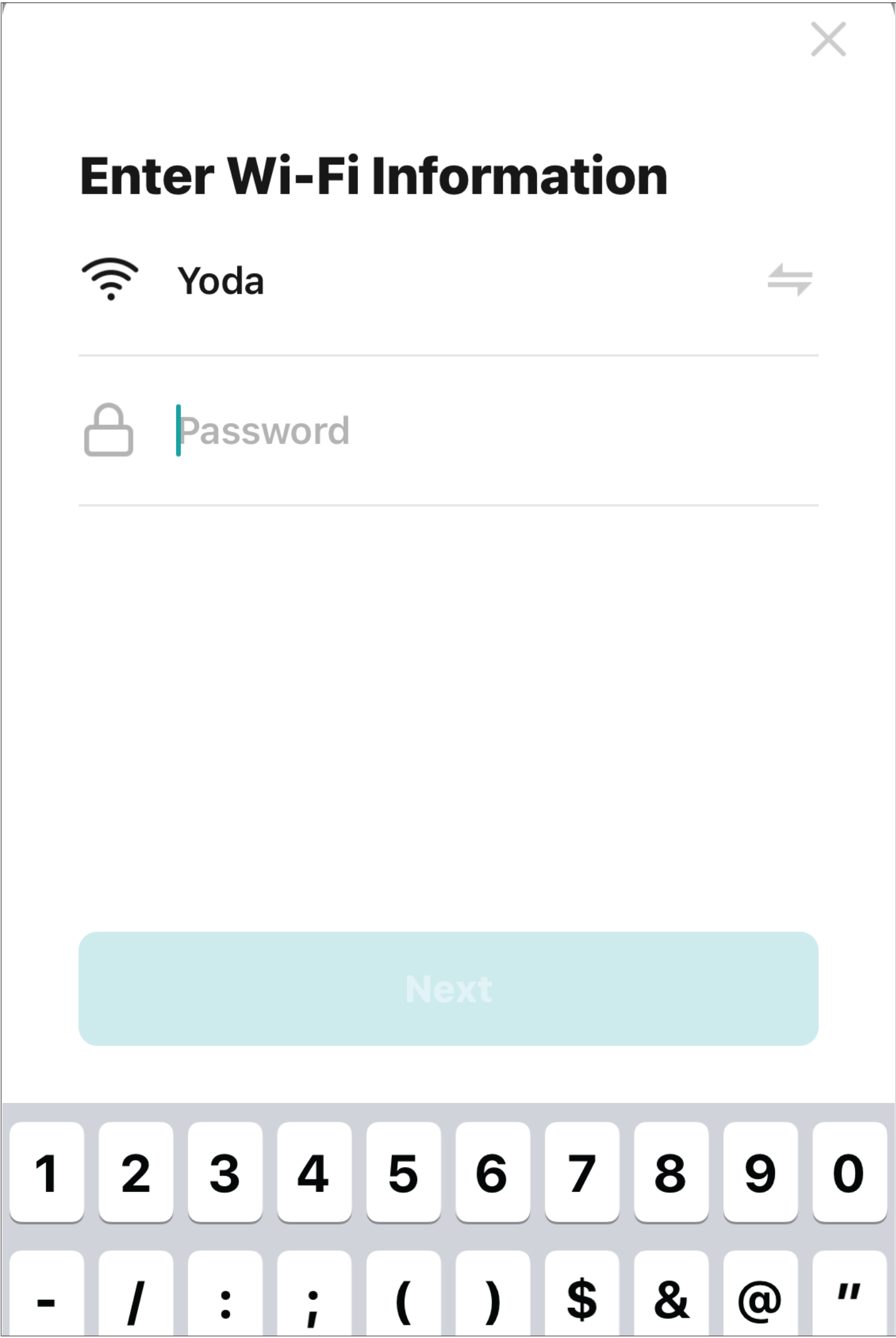
The product will automatically be discovered, tap “**Add**”.



# Step 5 - Enter the Wi-Fi credentials

Select a 2.4 GHz Wi-Fi network and enter the Wi-Fi password and tap “**Next**”. Ensure that the Wi-Fi password is entered correctly. If the password is entered incorrectly, you will not be notified, the device will simply fail to pair.

# Step 6 - The pairing status will be displayed on the screen



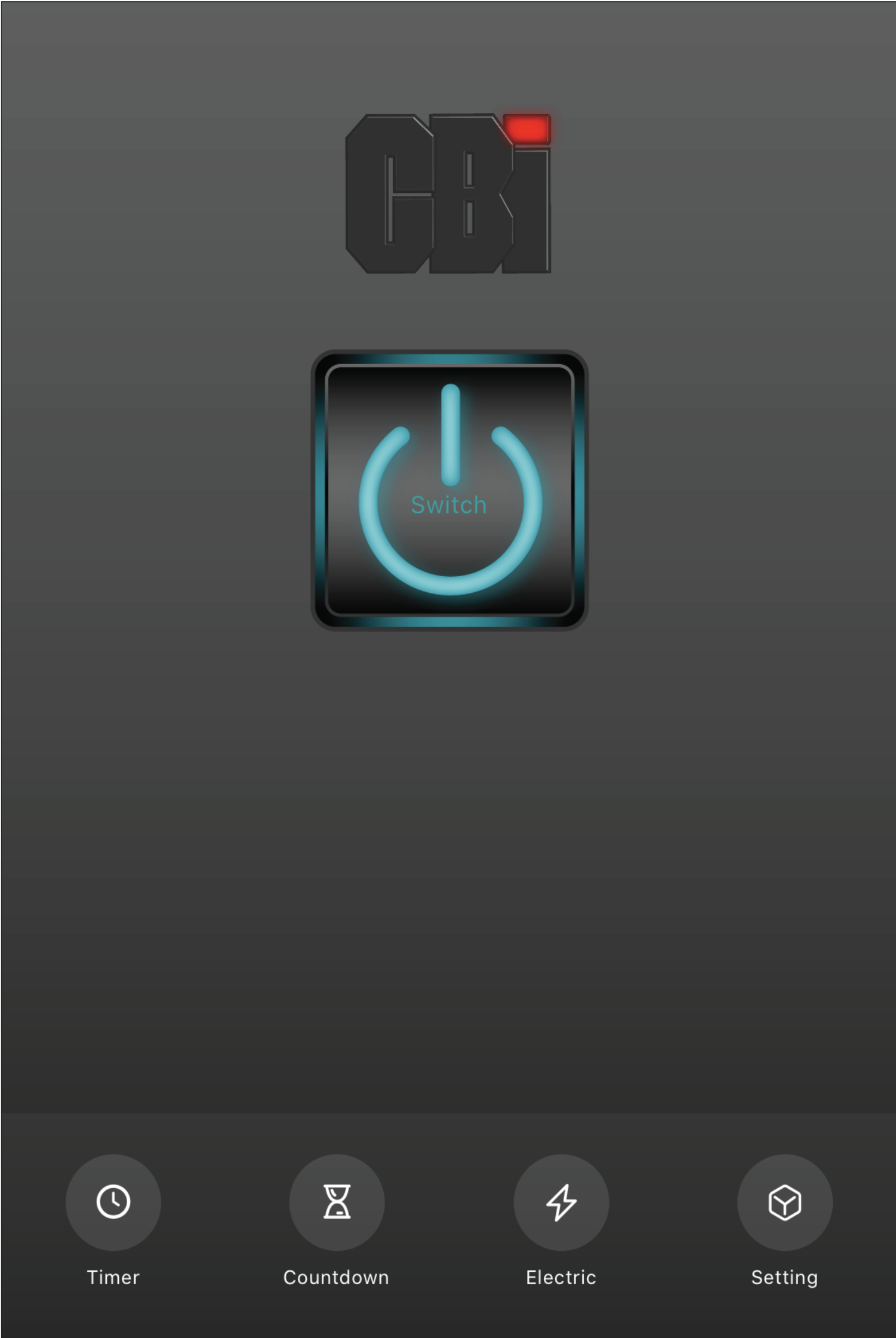
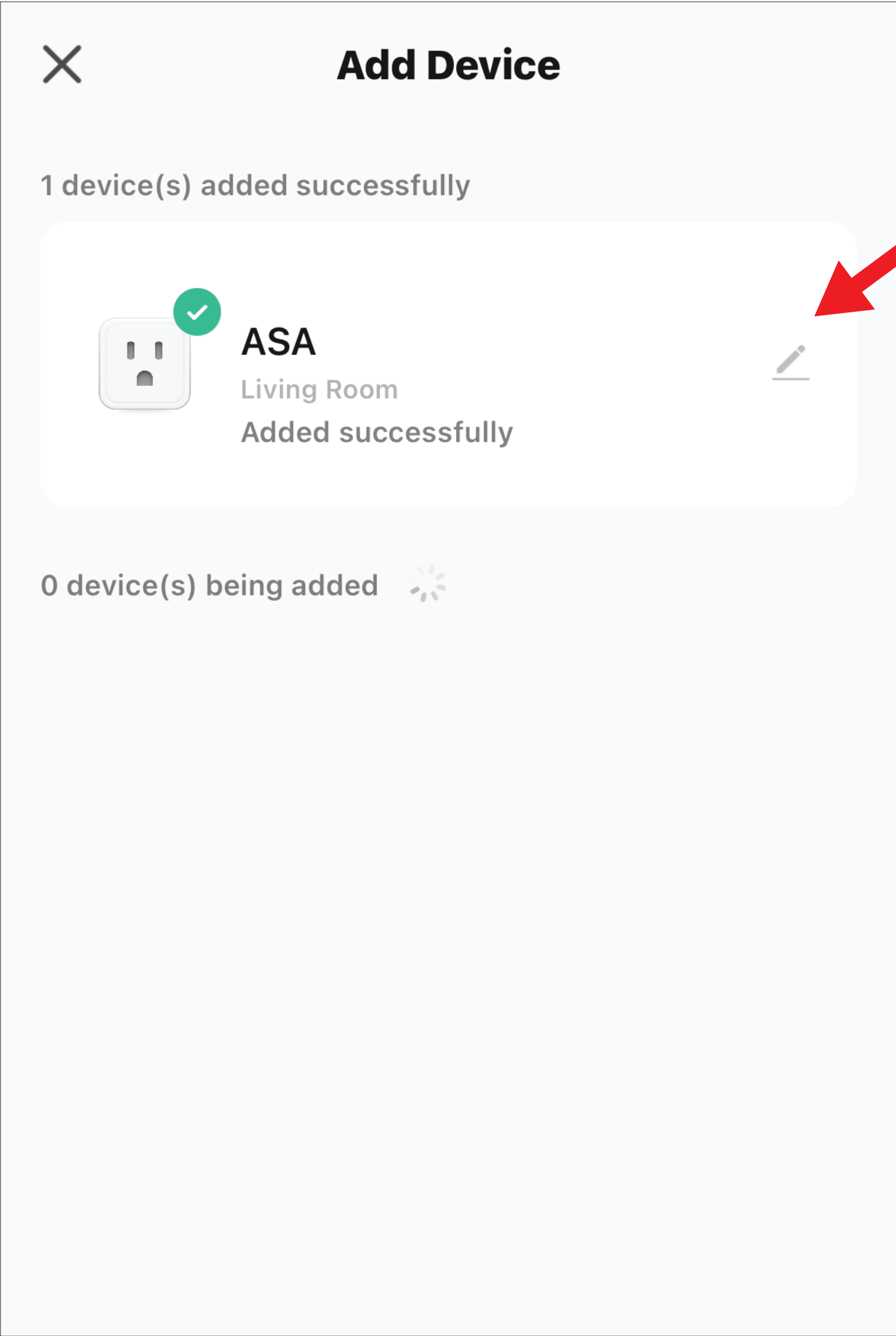


# Step 7 - Rename the device

The device has been added successfully. Tap on the edit button and change the device name if required. Tap “**Done**”.

# Step 8 - Setup complete

The device can now be controlled via the App. Schedules can be set in the timer menu..



# Troubleshooting

## 1. Cannot discover the device on the App

Ensure that the Wi-Fi router is 2.4 GHz and connected to the internet; and that the smartphone and Astute Smart Device connects to the same Wi-Fi. Ensure that the Wi-Fi password is correct.

Push and hold the Power Button on the ASA for 6 seconds and release. Now observe the LED indicator light **flashing rapidly (BLUE)**.

## 2. Refer to the Astute Support Hub for further troubleshooting:

[support.cbi-lowvoltage.co.za/topic/asa/](https://support.cbi-lowvoltage.co.za/topic/asa/)

## 3. Refer to the FAQs on the website for further troubleshooting:

[www.cbi-lowvoltage.co.za/faqs](https://www.cbi-lowvoltage.co.za/faqs)

## 4. Join our CBI Forum for further troubleshooting and support:

<https://forum.cbi.co.za/>

## 5. Subscribe to CBI's YouTube channel for instruction videos:

[CBI-electric: low voltage](https://www.youtube.com/channel/UCB1-electric: low voltage)

## 6. Ask our chatbot CBI-e for assistance on the Astute Range:

[www.cbi-lowvoltage.co.za](https://www.cbi-lowvoltage.co.za)

# Astute Smart Range Device Operation

## Power Button

**Manual Control:** tap Power Button to switch device ON or OFF

**Wi-Fi Pairing:** press Power Button and release after 6 seconds

## Power Failure

The unit will not operate during a power failure. The functions of the Astute Smart Device will be re-established when power, a Wi-Fi and internet connection is restored.

All automations and schedules will remain during power failures or loss of internet connection. The device will continue to switch according to the set schedules without internet connection, but automations will not function. Internet connection speed could affect switching and readings.

Manual operation can be done on the device in the event of loss of internet connection.



## Head Office:

1 Tripswitch Drive  
Elandsfontein  
Gauteng  
South Africa  
1401

Private Bag 2016  
Isando  
1600

**Tel:** +27 11 928 2000  
**Email:** [astute@cbi-electric.com](mailto:astute@cbi-electric.com)  
**Website:** [www.cbi-lowvoltage.com](http://www.cbi-lowvoltage.com)



**Website**



**LinkedIn**



**Facebook**



**YouTube**

© 2025 CBI (Pty) Ltd. All Rights Reserved.

**Please review our Customer T & Cs on [www.cbi-lowvoltage.co.za](http://www.cbi-lowvoltage.co.za) 399A931 REV A- 2025**

All rights reserved. Unless otherwise indicated, all materials on these pages are copyrighted by CBI (Pty) Ltd. No part of these pages, either text or image may be used for any purpose other than personal use. Therefore, reproduction, modification, storage in a retrieval system or retransmission, in any form or by any means, electronic, mechanical or otherwise, for reasons other than personal use, is strictly prohibited without prior written permission. CBI (Pty) Ltd reserves the right to alter any details of this document without notice and while every effort is made to ensure the accuracy of the content, no warranty is given as to accuracy of this document and no responsibility will be accepted for error or misinterpretation and any resulting loss.